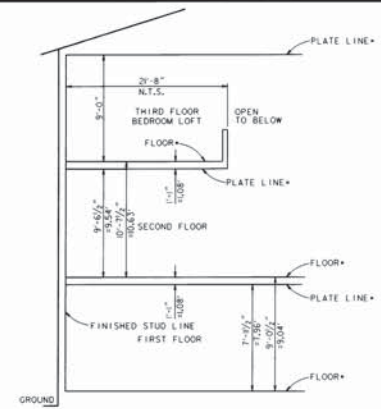
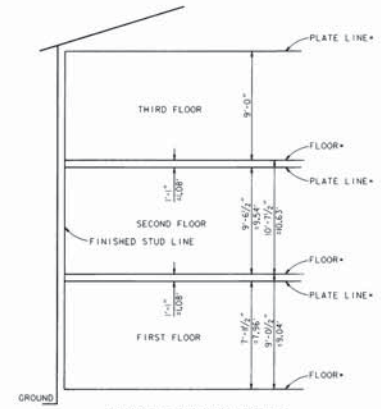


BOOK 857 PAGE 31
 OFFICIAL RECORDS OF
 MARICOPA COUNTY RECORDER
 HELEN PURCELL
 2006-1069823
 02/24 PM
 08/07/2006



*SEE PROFILE ELEVATION SCHEDULES FOR INDIVIDUAL UNIT ELEVATIONS
UNIT TYPES B & BR
 TYPICAL BUILDING CROSS SECTION
 N. T. S.



*SEE PROFILE ELEVATION SCHEDULES FOR INDIVIDUAL UNIT ELEVATIONS
BUILDING NUMBERS 1 THROUGH 5
 TYPICAL BUILDING CROSS SECTION
 N. T. S.

- LEGEND**
- INDICATES BOUNDARY OUTLINE OF UNITS, GARAGES, PATIOS, BALCONIES AND STORAGE TO FINISHED STUDS
 - INDICATES PLANE OF OUTSIDE WALL SURFACE
 - ▨ INDICATES AREA OF LIMITED COMMON ELEMENTS WHICH ARE ASSIGNED TO THE UNITS TO WHICH THEY ARE APPURTENANT
 - UNIT TYPE B1 INDICATES UNIT TYPE
 - B INDICATES BALCONY AREA
 - P INDICATES PATIO AREA

NOTE: ALL ANGLES ARE 90° OR 45° UNLESS OTHERWISE SPECIFIED

PROFILE ELEVATION SCHEDULE

BUILDING NO.1					BUILDING NO.3				
UNIT NO.	FIRST FLOOR FLOOR ELEV. PLATE LINE ELEV.	SECOND FLOOR FLOOR ELEV. PLATE LINE ELEV.	THIRD FLOOR FLOOR ELEV. PLATE LINE ELEV.		UNIT NO.	FIRST FLOOR FLOOR ELEV. PLATE LINE ELEV.	SECOND FLOOR FLOOR ELEV. PLATE LINE ELEV.	THIRD FLOOR FLOOR ELEV. PLATE LINE ELEV.	
101	1172.29 1180.25	1181.33 1190.87	-----	-----	116	1172.94 1180.90	1181.98 1191.52	-----	-----
102	1172.29 1180.25	1181.33 1190.87	-----	-----	117	1172.94 1180.90	1181.98 1191.52	-----	-----
103	1172.29 1180.25	1181.33 1190.87	1191.95 1200.95		118	1172.94 1180.90	1181.98 1191.52	1192.60 1201.60	
104	1172.29 1180.25	1181.33 1190.87	1191.95 1200.95		119	1172.94 1180.90	1181.98 1191.52	1192.60 1201.60	
105	1172.29 1180.25	1181.33 1190.87	1191.95 1200.95		120	1172.94 1180.90	1181.98 1191.52	1192.60 1201.60	
106	1172.29 1180.25	1181.33 1190.87	1191.95 1200.95		121	1172.94 1180.90	1181.98 1191.52	1192.60 1201.60	
107	1172.29 1180.25	1181.33 1190.87	1191.95 1200.95		122	1172.94 1180.90	1181.98 1191.52	1192.60 1201.60	
108	1172.29 1180.25	1181.33 1190.87	1191.95 1200.95		123	1172.94 1180.90	1181.98 1191.52	1192.60 1201.60	
109	1172.29 1180.25	1181.33 1190.87	-----	-----	124	1172.94 1180.90	1181.98 1191.52	-----	-----
110	1172.29 1180.25	1181.33 1190.87	-----	-----	125	1172.94 1180.90	1181.98 1191.52	-----	-----



**BUILDING TYPE B1B3
 1ST & 2ND FLOORS**

SHEET 6 OF 10

RICK ENGINEERING COMPANY
 8150 NORTH 16TH STREET
 PHOENIX, AZ 85016
 602.987.3350
 (AZ)602.285.2396
 rickeng.com

DATE: 08-AUG-2006 PROJECT NO. 3438 DRAWN BY: FW, MCM

PRELIMINARY-NOT FOR CONSTRUCTION OR RECORDING